

**There's
no better
investment
than in the
place you
love.**

BORDER

TRÜST

Your Community Foundation



A bold reimagining. A \$20m Community Impact Fund

Since 2005, we've been working alongside local leaders, not-for-profits, and generous supporters to fund grassroots programs that create positive local change.

Together, we've tackled some of the Border region's most pressing challenges including hunger, homelessness, bushfire relief, domestic violence, social isolation and disadvantage.

We've also partnered with those in our community with big charitable hearts to deliver projects that foster connection and inclusion, inspire future leaders, and open new pathways to education and employment.

With each initiative, we're helping build a community that empowers everyone to reach their potential.

Support the Border region today, tomorrow, and forever.

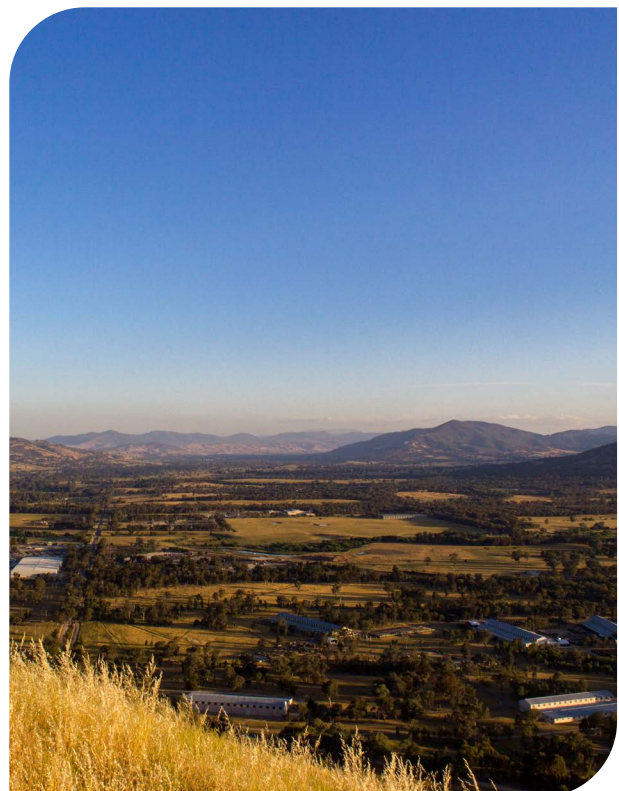
We have a bold plan to grow a \$20 million **Community Impact Fund** for our beloved region.

Supporting our communities today is vital, but planning for tomorrow is equally important. The Border region needs ongoing, sustainable support to meet urgent and unexpected needs, foster resilience, and cultivate future solutions.

Local philanthropy is the key to securing this future, and the **Community Impact Fund** is our region's foundation for enduring change. By growing this fund, we ensure that resources will be available, not only for today's challenges, but for whatever comes next.

Our **Community Impact Fund** will enable us to give in a sustained way, to tackle wicked problems, to respond when local need is urgent, and to be here for Border communities forever.

With your support, we can continue to make an impact for generations to come.



Join us as a Community Impact Investor

What is a Community Impact Investor?

Border Trust donors speak often of their desire to support the communities that have supported them, which in turn, helps their business, their employees and their families, thrive.

As a Community Impact Investor, your business joins a visionary group of leaders committed to creating enduring impact across the Border region.

Community Impact Investors help address urgent needs, build resilience, and enable long-term solutions for local communities.

We invite you to be part of the next chapter in transforming our region by becoming a Community Impact Investor.

What is a Community Impact Investor?

Your donation supports Border Trust across three key enablement areas:

Impact Enablement – Funds our essential operations, from assessing local needs and identifying solutions to grant-making, reporting, and community engagement. These operations ensure that your support reaches the right projects, making the greatest difference.

Impact Today – Provides immediate grants that address urgent community needs. These annual grants help our community meet today's pressing challenges and improve lives now.

Impact Tomorrow – Builds a perpetual endowment to ensure that Border Trust has resources for the future. This fund provides sustainable earnings for generations, securing a legacy of impact that the Border region can rely on.

Every dollar you give is strategically directed to maximise its impact, ensuring your contribution makes a tangible local difference.

Why become a Community Impact Investor?

Make a Local Impact: Your investment stays within the Border region, supporting the people, causes, and challenges closest to home.

Demonstrate Leadership: Showcase your business as a community-minded leader, setting the standard for corporate responsibility.

Strengthen Your Brand: Align your business with a trusted, future-focussed organisation delivering measurable outcomes for the local community.

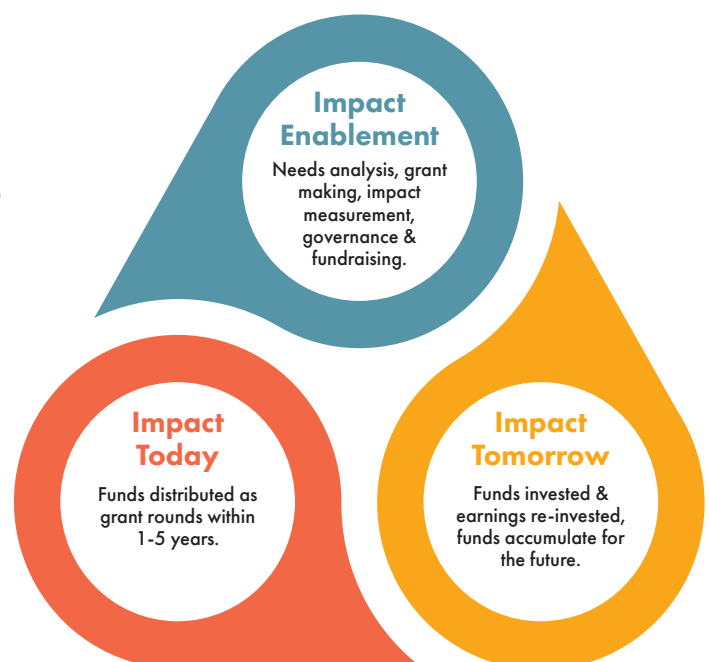
Inspire Your Team: Engage your employees in meaningful initiatives that create a sense of pride and connection to the community.

Acknowledging your generosity

As a valued Community Impact Investor, your generosity will be celebrated through:

- Recognition in Border Trust's Annual Report, website, and across social media platforms.
- Opportunities to feature in case studies, highlighting your contribution and its impact.
- Invitations to exclusive Border Trust events and networking opportunities.
- Tailored acknowledgment at community presentations and public engagements.

Your partnership is central to building the Border region's most enduring community asset.



Are you ready to invest boldly and collectively in the Border region's future?

We invite you to become a **Community Impact Investor** and create a lasting legacy for your business and our community. Together, we can build a sustainable future and make a significant impact today and tomorrow.

Contact us today to learn more about becoming a **Community Impact Investor** and how your business can lead the way in local philanthropy.

**With love,
from the Border region.**



BORDERTRUST

Connect With Us

mail@bordertrust.org.au | 02 6081 7201 | 0485 858 185 | www.bordertrust.org.au

Community Foundation for Albury Wodonga Region t/a Border Trust

ABN 34 111 519 012 Trustee | 11 064 494 169 DGR Trust

Trustee for Towong Community Bushfire Disaster Relief Fund - ABN 64 221 473 179